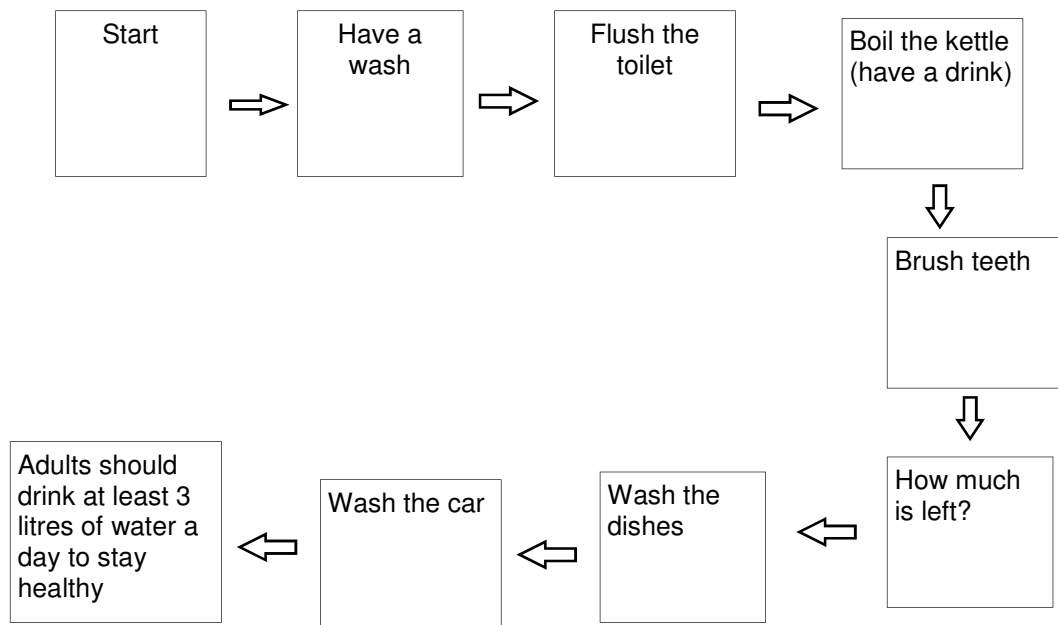


'Are you waterwise?' worksheet

Why save water?

- Two-thirds of rainfall evaporates or is absorbed by trees, crops and other plants.
- We can't use all the rest. We need to leave enough in rivers and streams to protect plant and animal life.
- Global warming means wetter winters and drier summers so there is less clean water when we need it.
- Each person uses on average 150 litres of water per day.
- If you had to fetch your own water it would mean 75 bottles from the supermarket or 16 buckets from a well.
- How long would your supply last?



How long does 150 litres last?

- Collect your water.
- Give most groups a bottle with a scale marked up to 150 litres and fill it up to the mark.
- Give some groups only 15 litres representing those living in less economically developed countries where there has been some sort of disaster (drought, earthquake) to interrupt supplies.
- Allow the children to move around the circuit of activity tiles tipping the appropriate amount of water into the bucket.
- Examine how much water they have left after breakfast.
- Can they spare any to do the remaining activities?
- Bring the group together to discuss their observations.
- Are they surprised how quickly it goes?
- How would they manage with only 15 litres per day?